

2002
Maxum
3100 SCR



2002 Maxum 3100 SCR

Offered for sale at \$59,900.00

The Maxum 3100 SCR is a versatile, sporty, affordable family express cruiser. She is sleek looking and has an upscale interior. She delivers on performance. This boat is well kept, and in excellent condition.

ENGINES

Twin Mercruiser 5.0L(V8 gas) engines 225hp per engine
Portside - 682 hours Starboard (new long block) with approximately 15 hours
Outdrives - Bravo II serviced with new bellows and painted Sept 2023
Props - Aluminum 3-blade x 2
BOW THRUSTER Side power 12 Volt **NO GENERATOR**

DECK EQUIPMENT

Davits, Sea-wise manual - Dinghy, 2014 10' J-P Rigid bottom - Outboard
Engine 2014 Mercury 9.9 HP - Boarding ladder
BBQ, Stainless portable propane - Full cockpit enclosure, Full winter cover
Last hauled and bottom painted Sept 2023

Specifications



Dimensions

Length Overall	26.5ft
Max Draft	3ft
Beam	8.5ft

Weights

Dry Weight	5,581Lb
------------	---------

Miscellaneous

Deadrise At Transom	21deg
---------------------	-------

Tanks

Fresh Water Tank	21gl
Fuel Tank	75gl
Holding Tank	1.10 gl

Accommodations

Heads	1
-------	---

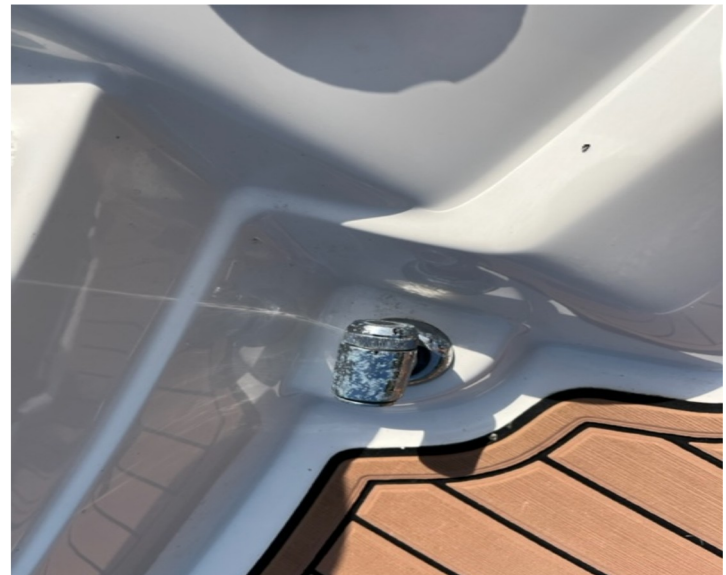


Engine Make	MerCruiser
Engine Model	8.2 MAG Big Block
Engine Year	2014
Total Power	430hp
Engine Hours	141
Engine Type	Inboard
Drive Type	Stern Drive
Fuel Type	Gas

Underwater Gear

- Propellers, Stainless Steel
- Trim Tabs, Hydraulic (Integrated w/Zeus System)

Deck Equipment

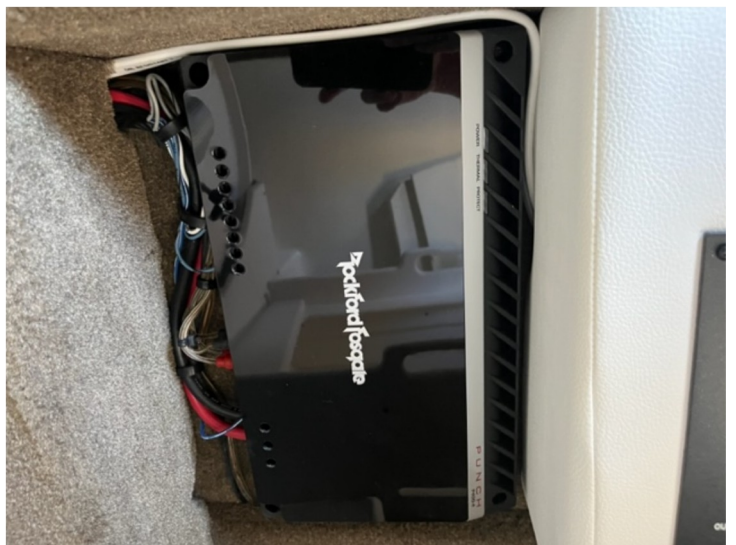




ADDITIONAL

- Bow and cockpit covers
- Bimini Top
- Walk-through windshield
- Quiet ride technology
- Transom Shower
- Auto fire system
- Life jackets
- Oars
- Hydraulic steering
- Trim tabs
- Power trim
- Ski tow
-

Electronics



ELECTRICAL EQUIPMENT
30 Amp shore power cord
Electric Windlass
ELECTRONICS
Stereo - Sirius xm

Amenity's



- Quiet ride - Noise reduction - insulated with foam, baffles and a full bulkhead
- Electric engine hatch
- Submersible Platform
- Bimini with folding tower
- Wet bar
- Snap in carpet
- Head and arm rests
- Transom walkthrough with courtesy lighting
- Transom shower
- Sirius stereo with Bluetooth

The Maxum 3100 SCR is a versatile, sporty, affordable family express cruiser. She is sleek looking and has an upscale interior. She delivers on performance. This boat is well kept, and in excellent condition.

ENGINES

Twin Mercruiser 5.0L(V8 gas) engines 225hp per engine

Portside - 682 hours Starboard (new long block) with approximately 15 hours

Outdrives - Bravo II serviced with new bellows and painted Sept 2023

Props - Aluminum 3-blade x 2

BOW THRUSTER Side power 12 Volt **NO GENERATOR**

TANKS

Fuel 150 gallons Aluminum - Water 35 gallons Plastic - Hot water tank 6 gallon - Holding 30 gallons Plastic

DECK EQUIPMENT

Davits, Sea-wise manual - Dinghy, 2014 10' J-P Rigid bottom - Outboard Engine 2014 Mercury 9.9 HP - Boarding ladder
BBQ, Stainless portable propane - Full cockpit enclosure, Full winter cover

Last hauled and bottom painted Sept 2023

SLIP AVAILABLE WITH THE APPROVAL OF MARINA MANAGEMENT. NO LIVEBOARD